

3.7m DOWNLINK



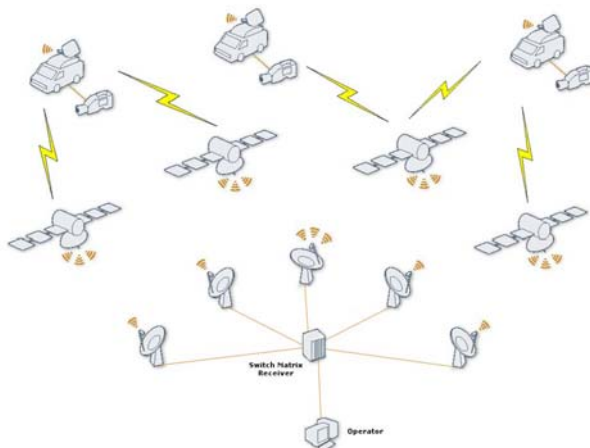
3.7m Antenna



3.7m Downlink Station

Dedicated to customers looking for a TVRO station, comprising several receivers, spectrum analysers, thus to monitor uplinks or gathering feeds / programs for redistribution.

This system can ideally be used to simplify the operation of an advanced recording /monitoring system



With the TVRO System the customer does not need to hard-wire the components. By using a router it is possible to assign any input to a specific output of the router. Moreover, the possibility to connect several outputs to one input is also provided.

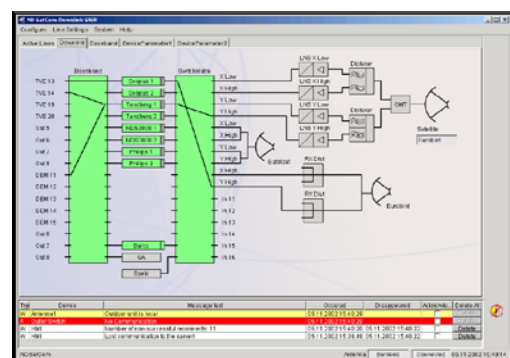
**//Compact,
versatile, efficient //**

Key Features

- 3.7m Ku-Band Antenna
- L-Band Router
- Standard NDSatCom M&C System

Options

- Equipment Shelter



- / High quality equipment integrated providing high reliability.
- / Easy to operate due to a clearly arranged system design.
- / Reliable support and after sales service performed by an experienced ND SatCom service team

3.7m Downlink Station

TECHNICAL SPECIFICATIONS

SPECIFICATIONS	Ku Band Downlink Station	
Antenna Type	Gregorian	
Travel Range	0° to 90°	Elevation
	± 60°	Azimuth
	± 50	Polarization
Wind Loading Operation (survival)	72 km/h gusts to 105 km/h (105 km/h)	
Receive Gain	51.7 dBi	at 12.75 GHz
Antenna Side lobes	Compliant to ITU-RS-580-5	
Antenna Crosspol. Isolation	35 dB on axis	
Receive Frequency	10.7 - 12.75 GHz	
Receive Polarization	Dual Linear	
G/T @20° Elevation with 90K LNB	29.5 dB/K	
Rack Space (Indoor Units)	15 to 25 HU	
Operating Temperature Range	-40°C to +50°C	
Humidity	0 to 100% condensing	
Power consumption [de-icing]	0.7 kVA [10 kVA]	

