



INSTALLING
RELIABILITY



www.ndsatcom.com

ANTENNA CONTROL

ACU 6030

ND SATCOM has been designing and manufacturing satellite network components continuously for more than 30 years.

Our ACU 6030 FIX STATION controller is easy to operate with its touchscreen. The built-in Antenna Control and Tracking System (ACTS) aligns the antenna within less than 10 minutes to the selected satellite and maintains the link within $<0.1^\circ$.

The ACU 6030 Indoor unit communicates either via serial line or Ethernet with outdoor ACUs co-located at your large ground station antenna.

The ND SATCOM Antenna Control & Tracking System (ACTS) manually controls or automatic tracks manufacturer-independent antenna systems pointed towards geostationary satellites.

Supported ND SATCOM Outdoor Antenna Control Units are:

- ACU 4100B
- ACU 605x Series
- ACU 606x Series

plus various Beacon Receivers.

A redundant power supply further increases the reliability of the ACU 6030.

The large graphic touchscreen visualizes the current state of the antenna system and enables the operator to monitor and control ND SATCOM components.

Operators can remotely supervise and control the status

of the antenna components, its pointing accuracy and tracking performance from the previous days via its WebUI or an optional M&C system.

The ACU 6030 has interfaces that may be used for customer specific solutions.

FEATURES

- Indoor unit connecting to various outdoor units (local outdoor operation possible)
- Redundant power supply
- Touchscreen
- M&C System API
- Web server
- On request, customised software for special set-ups
- Functional replacement for ACU 5030 with ACTS software
 - Control & Tracking function
 - multiple antenna control modes
 - Intelligent tracking algorithm with self-learning Orbit Model Tracking
 - Trace functions of antenna movement and a 3-day peaking viewer
 - Absolute measuring system for all axes

TECHNICAL SPECIFICATIONS – ACU 6030 FIX STATION

USER INTERFACES

Local HMI	Colour touchdisplay
Local Interface	1x USB-2.0 (Host, max. 500mA)
Remote Interface	10/100/1000 BaseT Ethernet RJ-45 port for web-based GUI

OUTDOOR ACU INTERFACES

Serial Interface	1x RS485 (configurable as RS232)
------------------	----------------------------------

INTERFACES RESERVED FOR CUSTOMER SPECIFIC SOLUTIONS

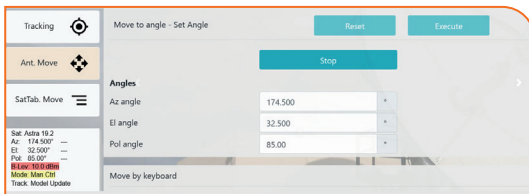
Alarm Inputs	8x independent (dry contact or open collector)
LAN Interfaces	8x 100BaseT Ethernet RJ45 ports with LAN switch
Switch Interfaces	3x waveguide or coax, 30VDC output
DC Output	typ. 30V/0.5A, up to 3A if no WGS is active, protected with fuse

BEACON RECEIVER

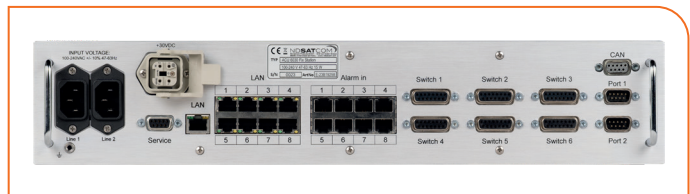
Control Interface	Serial interface RS232, LAN interface via SNMPv2
-------------------	--

ENVIRONMENTAL SPECIFICATIONS

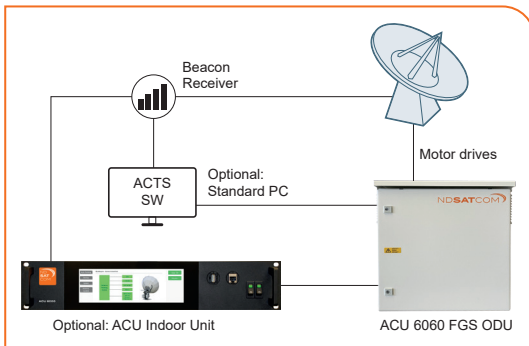
Temperature Range	0°C to + 50°C
Humidity	95% non-condensing
Dimensions (W x H x L)	19" x 2U x 350 mm
Weight	6.3 kg
Packing Dimensions	600 x 450 x 280 mm
Prime Power	100–240 VAC, ± 10 %, 47–63 Hz (redundant power supply)
Power Consumption	typ. 20W (peak 110W with customer specific solutions)
Regulatory Approvals	CE conformity marking



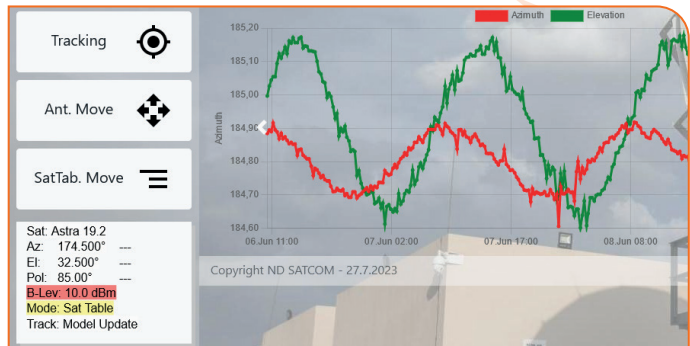
EXAMPLE OF TOUCHSCREEN MENUES



REAR VIEW WITH INTERFACES



UPLINK SYSTEM OVERVIEW



M&C GUI FOR ACU 6030 WITH ACTS SCREEN

HEADQUARTERS

ND SatCom GmbH
 Graf-von-Soden-Strasse
 88090 Immenstaad
 Germany
 PHONE: +49 7545 939 0
 FAX: +49 7545 939 8780
 E-Mail: info@ndsatcom.com

CHINA

ND SatCom (Beijing) Co. Ltd.
 PHONE: +86 10 85321 826

MIDDLE EAST

ND SatCom FZE
 PHONE: +971 4886 5012

ND SatCom reserves the right to make changes in its products, specifications or pricing at any time and without notice.

©NDSATCOM · WWW.NDSATCOM.COM