



Star



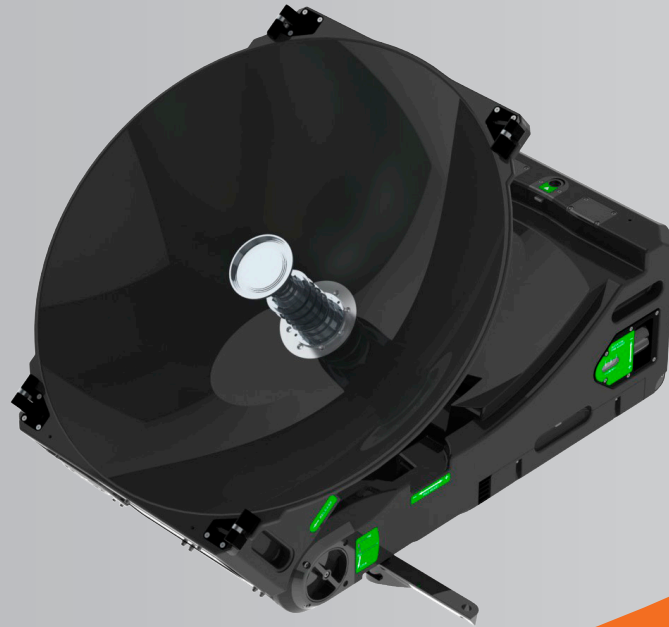
Full Mesh



Multi-Star



Hybrid



ND SATCOM

SKYWAN PORTABLE TERMINAL SPT 600 M

The lightweight SKYWAN Portable Terminal is a compact, integrated VSAT and modem solution facilitating rapid deployment of high throughput any to any connectivity across SKYWAN enabled networks.

Extremely rugged, portable and fully integrated, the SKYWAN Portable Terminal is the only unit of its type without any loose parts.

The terminal can be comfortably carried in a rucksack and checked in as airline carry-on bag.

The SKYWAN Portable Terminal antenna is exceptionally easy to use, has a high gain and can be deployed on any satellite by utilising a user friendly GUI. The unit can be out of its bag and operating live in three minutes.

The SKYWAN Portable Terminal may take the role of the hub in an All-Portable network. Star or mesh.

So, for the ultimate in portability, reliability and agile connectivity the SKYWAN Portable Terminal is second to none.

All SKYWAN 5G features (MF-TDMA) are supported. For more detailed specifications of SKYWAN 5G, refer to the dedicated datasheet.

BENEFITS

- Flexible and easy to use
- Ultraportable
- Fully integrated - no removable parts, ready to use
- Beacon-less pointing with network validation
- Ruggedised

KEY FEATURES

- Integrated SKYWAN 5G modem
- Integrated Ku-band amplifier
- Integrated sensors (GPS, inclinometer and compass) for pointing and peaking
- High performance 60 cm folding parabolic antenna
- Reliable in extreme environmental conditions
- Backpack/bag transportable
- Assisted, fast acquisition via SKYWAN TDMA carrier system and GUI
- Wide-range DC and AC power supply
- ITAR Free

APPLICATIONS

ND SatCom's SKYWAN Portable Terminal solution enables remote field personnel to establish connectivity to the Internet, public telephone network and secure corporate networks in a matter of minutes.

The SKYWAN Portable Terminal was designed for organisations that need fast, reliable and ultraportable network access for - but not exclusively:

- Emergency Response/Disaster Management Communication Services

- Border Control and Surveillance Applications
- Temporary Field Locations
- Mobile Telemedicine Applications
- Special Events

OPTIONS

- Softbag / Rucksack / Hardcase
- Ka- and X-band terminal
- White or NATO green chassis

TECHNICAL SPECIFICATIONS- SPT 600 M

Ku-Band ²	
Operating Band	Tx: 13.75 GHz to 14.5 GHz Rx: 10.95 GHz to 12.75 GHz
Antenna	60 cm Folding Parabolic
EIRP(SAT)	50.4 dBW @ 14.15 GHz
G/T	14.4 dB/K @ 11.85 GHz
Transmit Gain	36.4 dBi
Receive Gain	34.8 dBi
RF Options	25W BUC (P1dB = 44 dBm) Low/Mid/High Band LNB ¹
Polarisation	Linear (H/V) Rx orthogonal to Tx

PHYSICAL	
Packaging	Single IATA compliant case
Weight	< 19.5 Kg, ready to transmit
Dimensions	680 mm (L) x 360 mm (W) x 294 mm (H)

ENVIRONMENTAL	
Temperature Range	Operational:-20 to +55°C (excl. Solar radiation) Storage:-40 to +80°C
Wind Loading	50km/hr (operational) 70km/hr (gusting) 100km/hr (survival)
Ingress Protection	IP55

Power	90- 260VAC (47- 63Hz) or 11- 36VDC AC and DC cables included
Power Consumption	250W (typ.)
Altitude	3000 m @ -10°C (operational) 5000 m @ -30°C (non-operating)



CONTROL INTERFACE	
Local Control	3.5" TFT-LCD 640 x 480 Graphical User Interface Two Button Control
Remote Control	Web Browser Setup WebGui for SKYWAN 5G and ACU

INTERFACES	
Ethernet	10/100/1000, RJ45, to SKYWAN 5G 10/100 Base-T, RJ45, to ACU and SKYWAN 5G
L-Band	SKYWAN 5G TX-OUT, N-Type BUC Input, N-Type Receive Monitor Output, N-Type

¹ Standard LNBs for: Low-Band 10.95 - 11.70 GHz / Mid-Band 11.70 - 12.20 GHz / High-Band 12.25 - 12.75 GHz

² Ka-Band on request

HEADQUARTERS

ND SatCom GmbH
Graf-von-Soden-Strasse
88090 Immenstaad
Germany
PHONE: +49 7545 939 0
FAX: +49 7545 939 8780
E-Mail: info@ndsatcom.com

CHINA

ND SatCom (Beijing) Co. Ltd.
PHONE: +86 10 6590 6869/6878

MIDDLE EAST

ND SatCom FZE
PHONE: +971 4886 5012

www.ndsatcom.com

ND SATCOM