

# MEDIA FLEET MANAGER

Innovative Transponder Management  
for integrated DVB and IP based  
Production Workflows



ND SATCOM



Benefit from the present to design the future. Media Fleet Manager integrates DVB and IP sessions in one system.

## Easy scheduling of video transmissions using fixed stations & your SNG fleet

Live news coverage and event reporting from anywhere in the world today would be inconceivable without Satellite News Gathering (SNG). In order to maintain around-the-clock news coverage and smooth production, broadcasters and news organizations rely on a comprehensive and reliable scheduling system to optimize and remotely manage the transmission resources among their fully automated fleets of SNG/ENG vehicles and fixed uplink/downlink stations.

The ND SatCom Media Fleet Manager is an easy-to-use management tool to plan, schedule and book DVB and IP uplink sessions via fixed and mobile stations. Bookings can be made faster and more conveniently than by fax or phone. Mobile uplink operators can respond immediately to video contribution requests. A central database stores all events and bookings and the resource management screen displays the status of available transponders and stations. Support of DVB and IP transmissions enables broadcasters to optimize their production workflow.

### KEY FEATURES

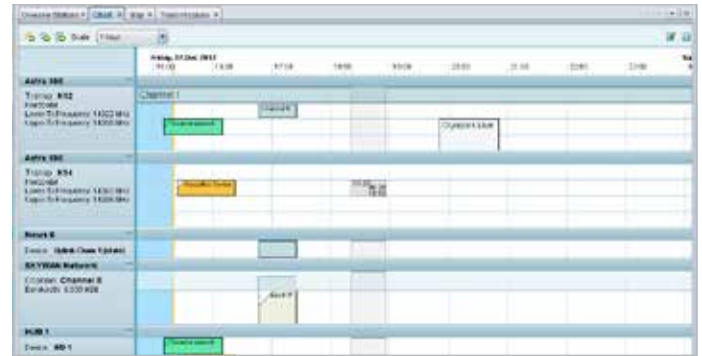
- Schedule and control DVB and IP uplink sessions via mobile and fixed stations
- Assign uplink sessions to several downlink stations (Multicast)
- Support for MPEG over IP, Data IP, DVB-S, DVB-S2 (SD, HD) and Encryption (BISS)
- SKYWAN IP and DVB-S2 transmissions in parallel
- Automatic transmission route calculation (uplink chain – transponder/slot – downlink chain)
- Support recurring bookings of transmission series
- Support temporarily available resources (devices, bandwidth) via availability configuration
- Dynamic booking of SKYWAN MF-TDMA carriers
- Provision of real-time status with regard to SNGs, fixed stations and transmission
- Support for Service Provider with User Management, Access Control, and Sub-Network Views
- Multiple transponder support
- Easy configuration of SNG setups
- Booking of transmissions in less than 10 clicks
- User configurable layout
- Ready for 100 stations and 50 booking clients
- Powerful report engine to generate any kind of reports
- External interface to other booking systems

# Our Technology

ND SatCom offers operators an advanced server platform with the same familiar look and feel as the ND SatCom Monitoring & Control System. Minimal training is required to operate this management tool for clients already using ND SatCom SNGs as well as uplink and downlink M&C software. The software resides on off-the-shelf PCs with Windows operating systems.

## OVERVIEW SCHEDLING ACTIVITIES

The Chart View provides a comprehensive colour-coded timeline of transmission events and activities. It presents an attractive preview of actual events and free resources in the form of a calendar. New sessions can be easily introduced online using familiar drag & drop functionality. Resources are checked to ascertain whether they are really free and available, thus avoiding double bookings.



Chart

## NETWORK OVERVIEW: MAP

The Media Fleet Manager provides a graphical illustration of the network layout including SNG vehicles and fixed stations. The map view presents position and automatically updated status of any SNG or fixed station. The available zoom levels depend on the map data used. Various map data is available on public or dedicated GeoServers.



Map

## NETWORK OVERVIEW: STATIONS

This network overview type presents stations; status and stations; transmission list. The layout of each screen is customizable. Stations can be grouped and the detail level is selectable.

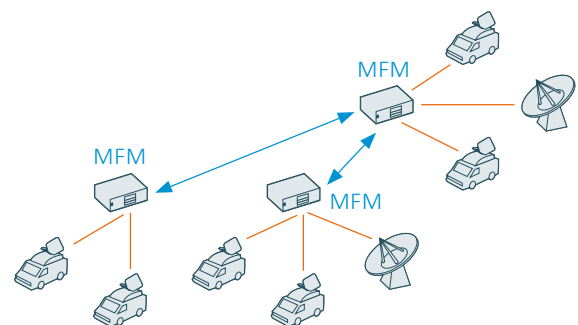
## EXTERNAL INTERFACE

The external interface to other booking systems opens up new options for service providers to share resources and satellite capacity over several booking systems. In addition it is now possible to cluster several Media Fleet Manager systems. Features are:

- Full synchronization of resources (transponders, devices) in both directions
- Synchronization of only shared space capacity
- Open interface to connect to other Media Fleet Manager or booking systems from different suppliers
- Master – Slave capabilities



External interface





### MULTI-SATELLITE FUNCTIONALITY

The Media Fleet Manager is able to allocate resources on different satellites. With ND SatCom's Automatic Pointing System (APS), each SNG points its satellite antenna to the requested satellite. Pointing can be performed on DVB or SKYWAN TDMA carriers.

### REMOTE CONTROL VIA GPRS/UMTS

Optionally, each SNG can be equipped with a GPRS/UMTS router. This kind of network connectivity upgrades the SNG with additional remote control functionality, as an alternative to the TDMA network connection.

#### Benefits:

- Access to SNG's M&C System before satellite antenna is pointed
- Remote control of antenna (manual drive, auto stow, etc.)
- Antenna can be pointed by remote control to any visible satellite if SNG is equipped with a dedicated spectrum analyzer
- Improved troubleshooting support

### TYPICAL WORKFLOW

1. Booking of transmissions using MFM clients
2. Position SNG vehicle at location where news happens
3. Automatic transfer of bookings from MFM to participating stations (SNG)
4. Automatic feed activation and deactivation with respect to booking data

Connectivity between the Media Fleet Manager Server in the Network Operation Centre and the M&C System in the stations (e.g. SNG) is provided via an IP connection. Usually, the MF-TDMA network SKYWAN is used to transfer booking information.

#### HEADQUARTERS

ND SatCom GmbH  
Graf-von-Soden-Strasse  
88090 Immenstaad  
Germany  
PHONE: +49 7545 939 0  
FAX: +49 7545 939 8780  
E-Mail: [info@ndsatcom.com](mailto:info@ndsatcom.com)

#### CHINA

ND SatCom (Beijing) Co. Ltd.  
PHONE: +86 10 6590 6869/6878

#### MIDDLE EAST

ND SatCom FZE  
PHONE: +97148865012