



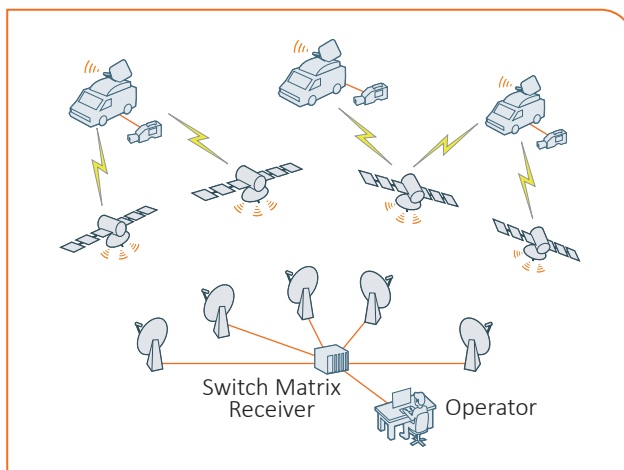
INSTALLING
RELIABILITY

www.ndsatcom.com

3.7 M DOWNLINK STATION

Dedicated to customers looking for a TVRO station, comprising several receivers, spectrum analyzers, thus to monitor uplinks or gathering feeds/programs for redistribution.

This system can ideally be used to simplify the operation of an advanced recording/monitoring system.



With the TVRO System the customer does not need to hard-wire the components. By using a matrix it is possible to assign any input to a specific output of the router. Moreover, the possibility to connect several outputs to one input is also provided.

KEY FEATURES

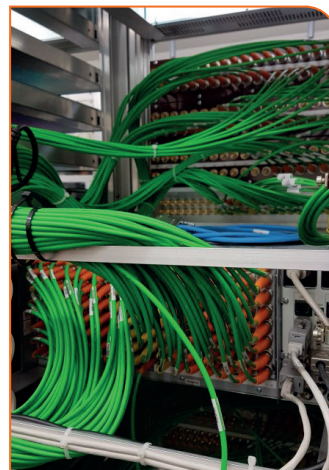
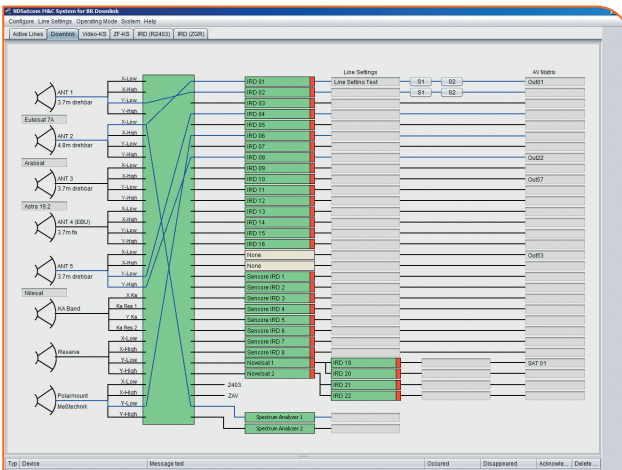
- 3.7 m Ku-Band antenna
- L-Band Matrix
- High quality equipment integrated providing high reliability
- Easy to operate due to a clearly arranged system design
- Reliable support and after sales service performed by an experienced ND SATCOM service team

OPTIONS

- Equipment Shelter
- Standard ND SATCOM M&C System

TECHNICAL SPECIFICATIONS

ANTENNA	
Frequency Range	Ku-Band
Antenna Type	Gregorian
Polarisation	2-port linear
Receive Frequency	10.95 – 12.75 GHz
Receive Gain	51.40 dBi@midband
Antenna Noise temperature	30 K@30° elevation
G/T 30° elevation with 60 K LNA	31.6 dB/K
Antenna Side lobes	Compliant to ITU-R S.580-6 and ITU-R S.465-5
Cross Polarisation Isolation	35 dB on axis
Travel Range	Elevation: 0° to 90° continuous Azimuth: 120° continuous
Wind Loading	Operational: 72 km/h gusting to 105 km/h Survival: 200 km/h in any position
Operational Temperature	-40 °C to +52 °C
Humidity	0 to 100 % with condensation
Power Consumption (with de-icing)	0.7 kVA (3.4 kVA)



HEADQUARTERS

ND SatCom GmbH
 Graf-von-Soden-Strasse
 88090 Immenstaad
 Germany
 PHONE: + 49 7545 939 0
 FAX: + 49 7545 939 8780
 E-Mail: info@ndsatcom.com

CHINA

ND SatCom (Beijing) Co. Ltd.
 PHONE: +86 10 6590 6869/6878

MIDDLE EAST

ND SatCom FZE
 PHONE: +971 4886 5012